

base7 nxSSX Release 4.3.1

SIP/ISDN/CAS/ISUP/SSF Softswitch for Next Generation Networks

The base7 nxSSX is a software-based software platform that offers complete Class 4 and 5 services, full charging integration and all of the SSF features of a traditional SSP in a single platform running on off the shelf server hardware or virtual machines.

Types of Deployment

- *Class 5 Office Switch*
- *Class 4 Transit or Tandem*
- *Media Gateway or Media Gateway Controller*
- *International or TDM/IP Gateway*

Access Features

- *SIP*
- *Direct wire 2-wire subscribers*
- *FXO/FXS*
- *GR-303*
- *ISDN BRI/PRI*
- *MSAN*
- *Broadband Loop Carrier (BLC)*

PERFORMANCE. AVAILABILITY

OPERATING SYSTEM

Linux RHEL/Centos

SUBSCRIBERS/REGISTRATIONS

1 mio per reference server pair

CONCURRENT CALLS

800k per reference server pair

HIGH AVAILABILITY

99.9999 % availability

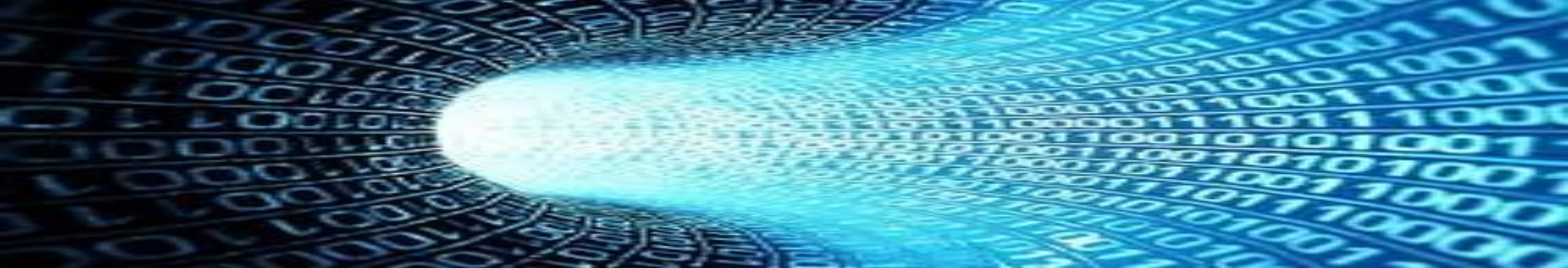




Signalling and Protocols

- *SIP (RFC 3261), SIP-I, SIP-T*
- *SIGTRAN M2UA, M3UA, M2PA, SUA, IUA, DUA(DPNSS)*
- *Q.931 ISDN PRI (ETSI N1/N2, Lucent, Nortel)*
- *MEGACO/H.248 v1, v2. MGCP v1, v1'*
- *E1/T1 CAS*
- *ITU/ANSI SCCP, TCAP*
- *INAP CS1-CS4, CAMEL 1-3, National Variants*
- *ISUP Q.767, ETSI v2, ANSI, National Variants*
- *BICC*
- *L/MNP DIPS VIA SCCP/TCAP*
- *Diameter Ro/Rf interfaces Sx interfaces*
- *TAP v2,3*
- *Lawful Intercept ETSI TS 101 331, TS 201 158, TS 101 671, CALEA TIA J-STD-025A, T1.678*





Value Added Services

- *Auto Attendant*
- *IVR*
- *Call Queueing*
- *Call Pickup*
- *Voice Mail*
- *Speed dial*
- *Follow Me*
- *Call Back*
- *Auto Redial*
- *Do Not Disturb (DND)*
- *Alarm call*
- *Call Waiting*
- *Malicious call Identification (MCID)*
- *3-Way Conference*
- *Group call (CGG)*
- *Hotline/Warmline*
- *Call Park*

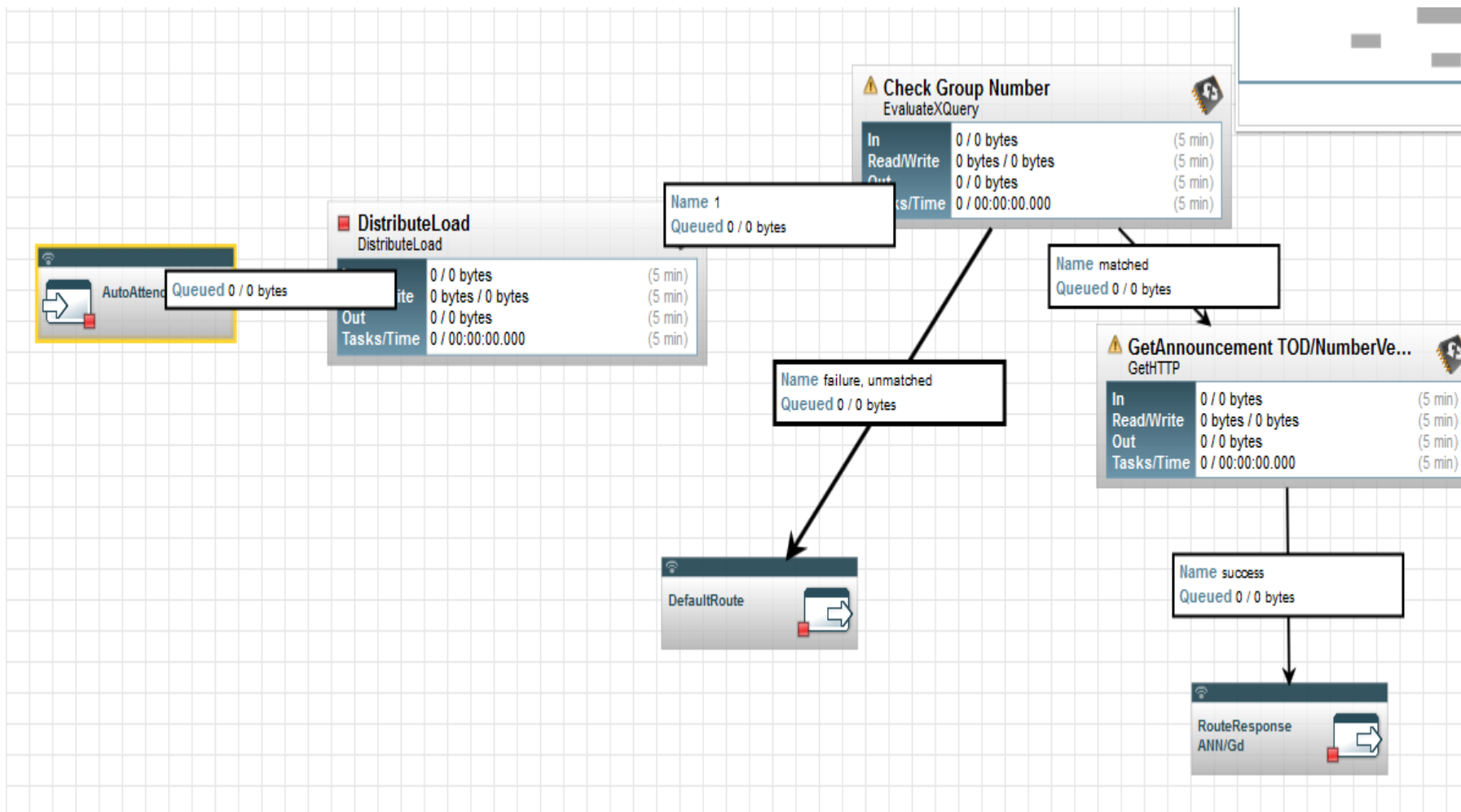
High Availability

- *The platform is deployed with mesh and association failover/load balanced connection to their network endpoints/IP associations.*
- *The back end message account , statistics and scripting dabatbases are configured as replicated databases to ensure no data loss in the case of application or hardware failure*
- *The platform is designed to allow N+1 redundancy*
- *All platform modules are set under minder control for automated action on failure or on statistics thresholds being breached.*



Service Logic

There is a separate service logic builder which can be used for custom call parameter mapping, service logic building and custom numbering schemes. An example logic script is shown below





Web GUI/Statistics and Reporting

There is a web based GUI for subscriber configuration, system configuration and service management. This can be multi-tenanted to allow multiple customers to access their specific elements.

There is an embedded elasticsearch instance with a GUI for real-time and historical reporting. This makes all data collected by the platform able to be queried using natural language queries for powerful real-time and historical analytics.

